

1

♠ 975
♥ AJ
♦ K109642
♣ A5

♠ AJ84
♥ 105
♦ Q8
♣ KQ976

♠ Q2
♥ KQ98632
♦ J3
♣ 43

♠ K1063
♥ 74
♦ A75
♣ J1082

2

♠ KJ98
♥ A7543
♦ 104
♣ AK

♠ AQ10752
♥ K86
♦ 73
♣ Q6

♠ 64
♥ 92
♦ J98652
♣ 942

♠ 3
♥ QJ10
♦ AKQ
♣ J108753

3

♠ 97
♥ A1096
♦ AQJ107
♣ Q9

♠ K
♥ KJ854
♦ 632
♣ K1065

♠ Q10865
♥ 2
♦ 85
♣ J8432

♠ AJ432
♥ Q73
♦ K94
♣ A7

4

♠ 98532
♥ A
♦ J43
♣ A982

♠ AQ6
♥ Q1065
♦ AQ102
♣ 64

♠ KJ107
♥ K74
♦ K875
♣ J7

♠ 4
♥ J9832
♦ 96
♣ KQ1053

Board (1) Av: NS=-50

N-S	E-W	Contract	L	N-S	E-W	IMP
1	17	3H	E 4 CJ		170	-3
17	1	4H	E-1 DA	50		3
2	20	3H	E 3 CJ	140		-3
20	2	3NT	N 3 HK	400		10
3	12	3H	E 3 CJ	140		-3
12	3	3H	E 3 CJ	140		-3
4	21	3H	E 3 CJ	140		-3
21	4	4D	N-1 SQ	50		0
5	13	3H	E 3 CT	140		-3
13	5	3H	E 3 CT	140		-3
6	9	3H	E-1 CJ	50		3
9	6	3D	N 3 HK	110		4
7	10	3H	E 3 CJ	140		-3
10	7	3H	E 4 CJ	170		-3
8	15	3H	E 3 CJ	140		-3
15	8	3H	E 4 S3	170		-3
11	19	3NTxN	4 SQ	650		12
19	11	3D	N 3 C5	110		4
14	23	3H	E 4 CJ	170		-3
23	14	3NT	N 3 HQ	400		10
16	18	3NT	N-2 HK	100		-2
18	16	3H	E 3 CJ	140		-3
22	24	3H	E 3 CT	140		-3
24	22	4D	N-1 SQ	50		0

Board (2) Av: NS=+730

N-S	E-W	Contract	L	N-S	E-W	IMP
1	17	4H	N 6 S6	680		-2
17	1	4H	N 6 S6	680		-2
2	20	3NT	N 6 S6	690		-1
20	2	6H	N 6 S6	1430		12
3	12	3NT	N 7 S6	720		0
12	3	3NT	S 7 S5	720		0
4	21	4H	N 5 S6	650		-2
21	4	4H	N 6 S2	680		-2
5	13	4H	N 6 D7	680		-2
13	5	5H	S 6 SA	680		-2
6	9	3NT	N 7 S6	720		0
9	6	3NT	N 7 S6	720		0
7	10	4H	N 6 S6	680		-2
10	7	3NT	N 6 S6	690		-1
8	15	3Sx	W-5 CK	1100		9
15	8	4H	N 5 S6	650		-2
11	19	3Sx	W-5 CA	1100		9
19	11	3NT	N 6 S6	690		-1
14	23	4H	N 5 S4	650		-2
23	14	3NT	N 7 S5	720		0
16	18	5H	N 6 D5	680		-2
18	16	3NT	S 7 SQ	720		0
22	24	4H	N 6 S6	680		-2
24	22	3NT	N 7 S6	720		0

Board (3) Av: NS=+420

N-S	E-W	Contract	L	N-S	E-W	IMP
1	17	3NT	S 5 D6	460		1
17	1	3NT	N-1 C3		50	-10
2	20	3NT	S 4 C5	430		0
20	2	3NT	S 4 H5	430		0
3	12	3NT	S 5 H5	460		1
12	3	3NT	S 4 H5	430		0
4	21	3NT	S 5 H5	460		1
21	4	3NT	S 5 D6	460		1
5	13	3NT	N 4 D2	430		0
13	5	3NT	S 4 C5	430		0
6	9	3NT	N 4 H3	430		0
9	6	3NT	S 5 C5	460		1
7	10	3NT	S 4 H5	430		0
10	7	3NT	S 5 H5	460		1
8	15	3NT	S 5 C4	460		1
15	8	3NT	S 4 H5	430		0
11	19	3NT	N 5 C6	460		1
19	11	3NT	S 3 C2	400		-1
14	23	3NT	S 5 H3	460		1
23	14	3NT	N-1 C4		50	-10
16	18	3NT	S 5 C6	460		1
18	16	3NT	N 4 ST	430		0
22	24	3NT	N 5 H5	460		1
24	22	3NT	S 4 H5	430		0

Board (4) Av: NS=+190

N-S	E-W	Contract	L	N-S	E-W	IMP
1	17	3NT	W-2 C2	200		0
17	1	3D	W-1 HA	100		-3
2	20	3NT	E-2 CQ	200		0
20	2	3NT	W-2 C2	200		0
3	12	4S	E-1 CK	100		-3
12	3	4S	W-3 S2	300		3
4	21	3NT	W-2 S3	200		0
21	4	3NT	W-2 S3	200		0
5	13	4H	E-3 S2	300		3
13	5	4Sx	E-2 CQ	500		7
6	9	4C	N 4 H6	130		-2
9	6	3S	E 3 CK		140	-8
7	10	4S	E-2 CK	200		0
10	7	3Cx	N 3 D7	670		10
8	15	4H	W-2 S2	200		0
15	8	3NT	E-2 C2	200		0
11	19	4Cx	S-1 C7		200	-9
19	11	5Dx	W-3 HA	800		12
14	23	3NT	W-2 S8	200		0
23	14	3NT	W-2 C2	200		0
16	18	3NT	W-2 C8	200		0
18	16	4Cx	N-1 C4		200	-9
22	24	3NT	E-2 CQ	200		0
24	22	4H	E-1 CA	100		-3

5

♠ KJ96
♥ 64
♦ A94
♣ AQ84

♠ Q1085
♥ K73
♦ 106
♣ K973

♠ 7
♥ AJ52
♦ J87532
♣ 52

♠ A432
♥ Q1098
♦ KQ
♣ J106

Board (5) Av: NS=+620

N-S	E-W	Contract	L	N-S	E-W	IMP
1	17	4S	S 4 DT	620		0
17	1	4S	N 4 D7	620		0
2	20	4S	N 4 D7	620		0
20	2	4S	N 4 D3	620		0
3	12	4S	N 4 D3	620		0
12	3	3NT	N 3 D3	600		-1
4	21	4S	N 4 D6	620		0
21	4	4S	N 4 D2	620		0
5	13	3NT	N 4 H3	630		0
13	5	4S	N 4 D2	620		0
6	9	4S	N 4 D7	620		0
9	6	4S	N 4 D3	620		0
7	10	4S	S 4 DT	620		0
10	7	4S	N 4 D7	620		0
8	15	4S	N 4 D7	620		0
15	8	4S	N 4 D5	620		0
11	19	4S	N 4 D7	620		0
19	11	3NT	N 5 S7	660		1
14	23	4S	N 4 D8	620		0
23	14	4S	N 4 D7	620		0
16	18	4S	N 4 D6	620		0
18	16	4S	N 4 D7	620		0
22	24	4S	N 4 D5	620		0
24	22	4S	N 4 D7	620		0

6

♠ AKJ5
♥ A63
♦ A8
♣ J1096

♠ Q108763
♥ Q7
♦ J107
♣ 87

♠ 9
♥ KJ1098542
♦ 9
♣ 542

♠ 42
♥
♦ KQ65432
♣ AKQ3

Board (6) Av: NS=+1110

N-S	E-W	Contract	L	N-S	E-W	IMP
1	17	6NT	N 7 HK	1020		-3
17	1	6D	S 7 HQ	940		-5
2	20	6D	S 7 HQ	940		-5
20	2	6D	S 7 HQ	940		-5
3	12	6D	S 7 HQ	940		-5
12	3	7D	S 7 HQ	1440		8
4	21	6D	S 7 S7	940		-5
21	4	6D	S 7 HQ	940		-5
5	13	6D	N 7 H3	940		-5
13	5	7D	S 7 D7	1440		8
6	9	6C	N 7 S6	940		-5
9	6	7D	S 7 HQ	1440		8
7	10	7NT	S 7 H7	1520		9
10	7	7D	S 7 HQ	1440		8
8	15	6D	S 7 HQ	940		-5
15	8	6D	S 7 HQ	940		-5
11	19	7D	N 7 HQ	1440		8
19	11	7NT	N 7 D9	1520		9
14	23	6D	S 7 HQ	940		-5
23	14	6D	S 7 HQ	940		-5
16	18	6C	N 7 S6	940		-5
18	16	6D	S 7 HQ	940		-5
22	24	7NT	N 7 HQ	1520		9
24	22	6D	N 7 HQ	940		-5

7

♠ QJ52
♥ 9
♦ AQ42
♣ AQ53

♠ 84
♥ J75
♦ J108763
♣ 97

♠ 3
♥ AKQ10862
♦ K5
♣ K62

♠ AK10976
♥ 43
♦ 9
♣ J1084

Board (7) Av: NS=+570

N-S	E-W	Contract	L	N-S	E-W	IMP
1	17	5S	S 5 H3	650		2
17	1	5Hx	E-1 SA	200		-9
2	20	4S	N 5 HK	650		2
20	2	6S	S-1 H5		100	-12
3	12	5SxxN	5 HA	1200		12
12	3	5S	S 5 H3	650		2
4	21	4S	N 5 HK	650		2
21	4	5Hx	E-2 SK	500		-2
5	13	5S	N 5 H6	650		2
13	5	5Sx	S 5 H3	850		7
6	9	5Hx	E-2 SK	500		-2
9	6	5Hx	E-2 D9	500		-2
7	10	5Hx	E-1 SK	200		-9
10	7	4S	N 5 HA	650		2
8	15	5S	S 5 H5	650		2
15	8	5Hx	E-2 D9	500		-2
11	19	5Hx	E-2 SK	500		-2
19	11	4Sx	S 5 C9	990		9
14	23	5S	S 5 HJ	650		2
23	14	4Sx	N 5 HK	990		9
16	18	5S	S 5 H5	650		2
18	16	6S	S-1 D8		100	-12
22	24	5Hx	E-2 D9	500		-2
24	22	4S	S 5 DJ	650		2

8

♠ Q5
♥ 83
♦ K1093
♣ AK742

♠ KJ10942
♥ 9
♦ J742
♣ Q9

♠ 763
♥ KJ7642
♦ 86
♣ 83

♠ A8
♥ AQ105
♦ AQ5
♣ J1065

Board (8) Av: NS=+480

N-S	E-W	Contract	L	N-S	E-W	IMP
1	17	5C	S 7 SJ	440		-1
17	1	3NT	S 6 CQ	490		0
2	20	3NT	S 7 H9	520		1
20	2	5C	N 6 S3	420		-2
3	12	5C	S 7 H9	440		-1
12	3	5C	N 7 H9	440		-1
4	21	4Sx	W-3 CA	500		1
21	4	5C	S 7 H9	440		-1
5	13	5C	N 7 D2	440		-1
13	5	5C	S 7 SJ	440		-1
6	9	4Sx	E-5 D5	1100		12
9	6	3NT	S 6 D2	490		0
7	10	3H	E-4 CJ	200		-7
10	7	5C	S 7 H9	440		-1
8	15	6C	N 6 S3	920		10
15	8	3Sx	W-4 H8	800		8
11	19	5C	N 7 H9	440		-1
19	11	3NT	N 6 S3	490		0
14	23	4Sx	E-3 CA	500		1
23	14	5C	S 7 H9	440		-1
16	18	5C	S 7 H9	440		-1
18	16	5C	S 7 H9	440		-1
22	24	5C	N 7 H9	440		-1
24	22	3S	E-3 CA	150		-8

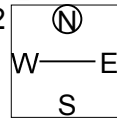
9

♠ A5
♥ AQ765
♦ A864
♣ A2

♠ K764
♥ K10843
♦ 72
♣ 103

♠ Q10
♥ 92
♦ KQ109
♣ Q9764

♠ J9832
♥ J
♦ J53
♣ KJ85



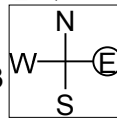
10

♠ 6
♥ AK9854
♦ KJ2
♣ Q64

♠ AJ8754
♥ Q63
♦ 98
♣ K10

♠ KQ93
♥ J107
♦ 106
♣ A832

♠ 102
♥ 2
♦ AQ7543
♣ J975



Board (9) Av: NS=-100

Board (10) Av: NS=+290

N-S	E-W	Contract	L	N-S	E-W	IMP
1	17	4H	N-3 S6		150	-2
17	1	5D	S-2 S6		100	0
2	20	3NT	S-3 S3		150	-2
20	2	3NT	S-2 S3		100	0
3	12	4H	N-2 D7		100	0
12	3	3NT	S-2 S3		100	0
4	21	3NT	S-2 D3		100	0
21	4	2D	N 4 CT	130		6
5	13	4H	N-2 S6		100	0
13	5	5D	N-1 S3		50	2
6	9	3NT	N-2 S9		100	0
9	6	5D	N-3 D2		150	-2
7	10	3NT	N-2 S4		100	0
10	7	6D	N-3 S6		150	-2
8	15	3NT	S-2 S3		100	0
15	8	3NT	S-2 S3		100	0
11	19	3NT	N-2 S4		100	0
19	11	2Sx	W 2 SA		670	-11
14	23	3NT	S-2 S9		100	0
23	14	3NT	S-1 S9		50	2
16	18	3NT	S-2 S3		100	0
18	16	3NT	S-2 D7		100	0
22	24	3NT	N-2 S3		100	0
24	22	3NT	N-1 S4		50	2
1	17	4H	N-1 SA		100	-9
17	1	4H	N-1 SA		100	-9
2	20	4H	S 4 SA	620		8
20	2	4H	N-1 D9		100	-9
3	12	4H	N 4 SA	620		8
12	3	4H	N 4 SA	620		8
4	21	4H	N 4 SA	620		8
21	4	4H	N-1 D9		100	-9
5	13	4H	N-1 D2		100	-9
13	5	4H	N-1 D9		100	-9
6	9	4H	N 4 D9	620		8
9	6	4H	N 4 SA	620		8
7	10	4H	N 4 D9	620		8
10	7	4H	N 4 D9	620		8
8	15	4H	N-1 D9		100	-9
15	8	4H	N 4 D9	620		8
11	19	4Sx	W-3 HJ	800		11
19	11	4Hx	N-1 D2		200	-10
14	23	4H	N 4 D8	620		8
23	14	4H	N-1 D9		100	-9
16	18	4H	N-1 D6		100	-9
18	16	4H	N 4 D9	620		8
22	24	4H	N 4 D9	620		8
24	22	4H	N-1 D9		100	-9